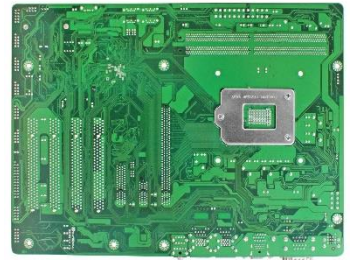


JNC9L-AH110

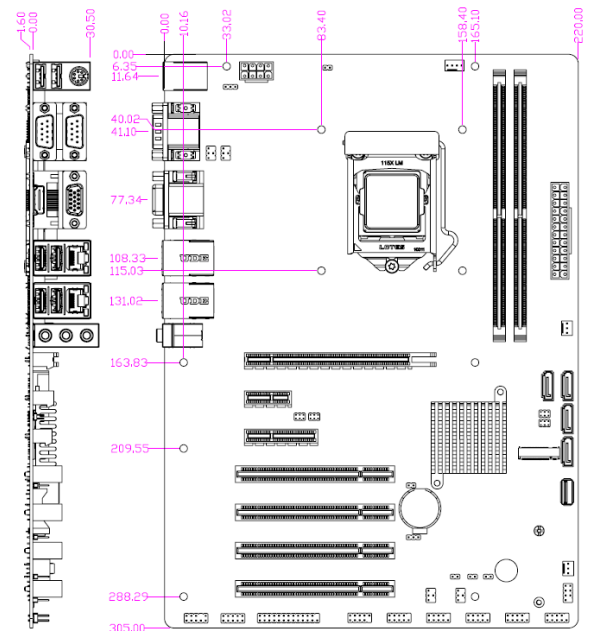
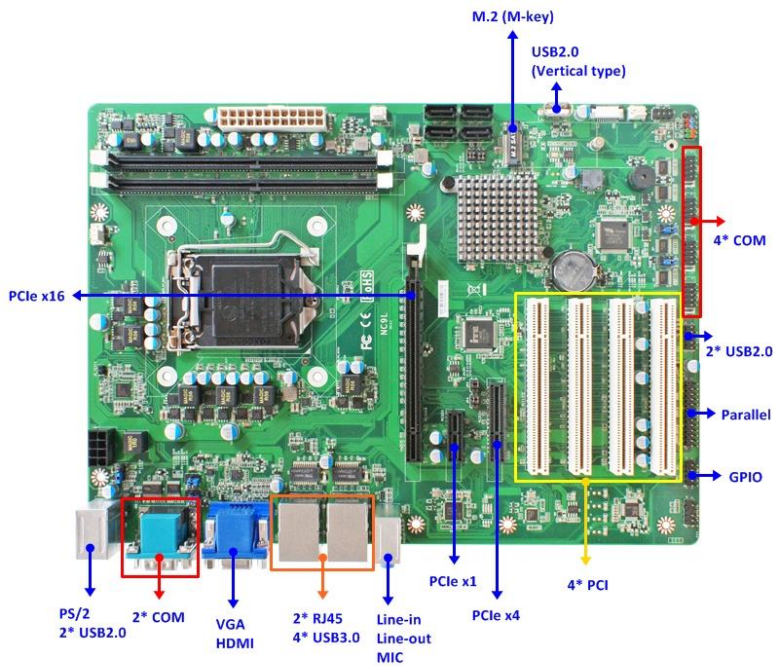
Intel® Sky Lake H110 Chip, support LGA1151 CPU, DDR4 up to 32GB, support ATX power input

1. Intel® LGA1151 Socket Core i3, i5, i7 Pentium Processor
2. DDR4 2133MHz SO-DIMM up to 32 GB
3. 1* Intel® I219LM GbE, 1* Intel® i211AT GbE
4. Support HDMI/VGA, 2* External COM, 4* Internal COM (COM1 support RS232/422/485, COM1/2/3/4 Support 5V/12V TTL)
5. 4* USB3.0, 5* USB2.0 (internal USB2 Support Dongle)
6. 1* PCIe x16 Slot, 1* PCIe x4 Slot, 1* PCIe x1 Slot, 4* PCI Slots
7. 1* M.2 socket (Support SSD, 2242/2280)
8. ATX power



I/O Diagram

Mechanical Drawings (Unit = mm)



Specifications

Model JNC9L-AH110	Form Factor ATX (305 * 220mm)
Processor System <ul style="list-style-type: none">Intel® LGA1151 Series Processor (Max. 100W)H110 chipsetAMI 128M Flash ROM BIOS	Expansion Slot <ul style="list-style-type: none">4* PCI1* PCIe x16 slot1* PCIe x4 slot1* PCIe x1 slot1* M.2 (M key, 2242/2280)
Memory 2* Long-DIMM DDR4 2133MHz Dual CH SDRAM up to 32GB	Graphics <ul style="list-style-type: none">Intel® HD Graphics, shared memory1* VGA (Max. Resolution: 1920×1200@60Hz)1* HDMI 1.4 (Max Resolution: 4096x2304@24Hz)Support Dual Displays
Ethernet 2* Intel GbE (1* i219LM, 1* i211AT)	Audio HD audio: Realtek ALC662VD
SATA 4* SATAIII (6.0Gb/s, SATA4 Co-lay M.2)	Rear I/O <ul style="list-style-type: none">1* VGA1* HDMI2* RJ454* USB3.0, 2* USB2.0Line-In, Line-Out, MIC2* COM (COM 1 support RS232/422/485, 5/12V TTL)1* PS/2
Internal Connector <ul style="list-style-type: none">3* USB 2.05* COM (COM3/4 Support 5/12V TTL)4* SATAIII (6.0Gb/s)1* Parallel1* M.2 (M key, 2242/2280)1* GPIO (8 bit)1* Chassis intrusion1* Audio Header1* AT mode	Watchdog Timer <ul style="list-style-type: none">From Super I/O to drag RESETCON#256 segments (10sec ~ 255min)
Power ATX PWR, AT/ATX Supported - AT : Directly PWR on as Power input ready - ATX: Press Button to PWR on after Power input ready	Compliance CE, FCC, RoHS, REACH
Temperature <ul style="list-style-type: none">Operating: 0°C ~ 60°CStorage: -20°C ~ 70°C	Warranty 2 Years Limited Warranty

* Specifications subject to change without notice, not responsible for typographical errors. Does not include HDD or OS.

Accessories

Parts Number	Description	Parts Number	Description
-----	JNC9L-AH110 M/B	G01-COM9-1F	Cable COM 9P/2 ROW MALE
G01-SATA3-BL-1F	Cable for SATA3	F04-MB-0XX-F	NC9L PS2+USB/2COM/VGA+HDMI/UL/UL/3JK