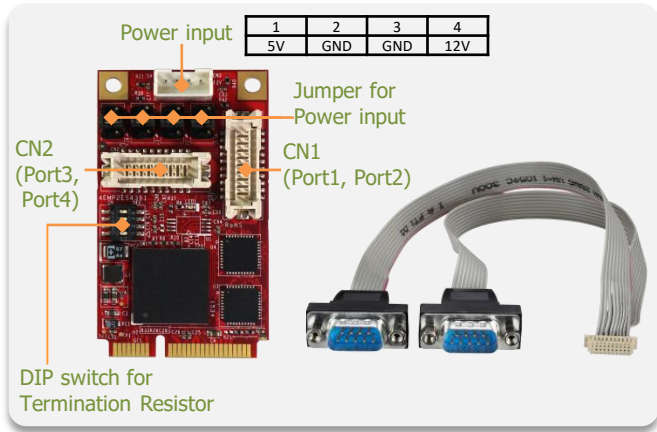


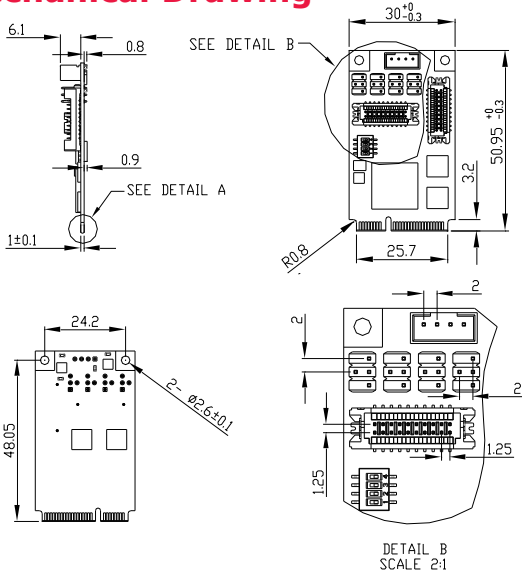
# EMP2-X404 mPCIe to four RS-232/422/485 Module



## Features

- PCIe 2.0 compliant. RS-232/422/485 mode configurable by software.
- 4800 to 3Mbps serial data rate (RS-232 921.6Kbps) serial data rate. 16C550 compatible. 256-byte FIFOs
- Industrial temperature(-40 °C to 85 °C) operation.
- Full RS-232 functions with DB9 connector
- Minimize possible mechanical intervention without daughterboard
- Termination resistor enabled/disabled by DIP switch
- RI/5V/12V output switched by Jumper.
- ESD(Electrostatic Discharge) protection circuit to prevent system damage.
- 30μ" golden finger, 3-year warranty.
- Industrial design, manufactured in innodisk Taiwan

## Mechanical Drawing



DIP Switch Setting	
OFF	Normal
ON	Termination

Jumper Setting	
RI	
5V	
12V	

DB9 Pin define			
Pin	RS-232	RS-485/RS-422	RS-485
		full duplex	half duplex
1	DCD	TX-	D-
2	RX	TX+	D+
3	TX	RX+	
4	DTR	RX-	
5	GND	GND	GND
6	DSR		
7	RTS		
8	CTS		
9	RI/5V/12V	5V/12V	5V/12V

## Specifications

**Headquarters (Taiwan)**  
5F., No.237, Sec. 1, Datong Rd.,  
Xizhi Dist., New Taipei City 221,  
Taiwan

Tel: +886-2-7703-3000  
Email: sales@innodisk.com

### Branch Offices:

**USA**  
[usasales@innodisk.com](mailto:usasales@innodisk.com)  
+1-510-770-9421

**Europe**  
[esusales@innodisk.com](mailto:esusales@innodisk.com)  
+31-040-3045-400

**Japan**  
[jpsales@innodisk.com](mailto:jpsales@innodisk.com)  
+81-3-6667-0161

**China**  
[sales\\_cn@innodisk.com](mailto:sales_cn@innodisk.com)  
+86-755-2167-3689

[www.innodisk.com](http://www.innodisk.com)

© 2018 Innodisk Corporation.  
All right reserved. Specifications  
are subject to change without  
prior notice.

December 24, 2019

Form-Factor	mPCIe
Input I/F	PCI Express 2.0 x 1
Output I/F	RS-232/422/485
Output Connector	DB-9 x 4
Max TDP	0.5W (3.3V x 150mA)
Dimension (WxLxH)	30 x 50.9 x 8mm
Temperature	Operation: W/T: -40°C ~ +85°C Storage: -55°C ~ +95°C
Environment	Vibration: 5G @7~2000Hz, Shock: 50G @ 0.5ms
Notes	Please download driver from MyInnodisk website. Windows: XP(32 bit), 7(32/64 bit), 8/8.1(32/64 bit), 10, WES7, CE7.0 Linux: Kernel 2.6.x and above.(We can provide Linux source for modification.)

## Order information

**EMP2-X404-W1(Wide Temp.)**  
mPCIe to four RS232/422/485 Module