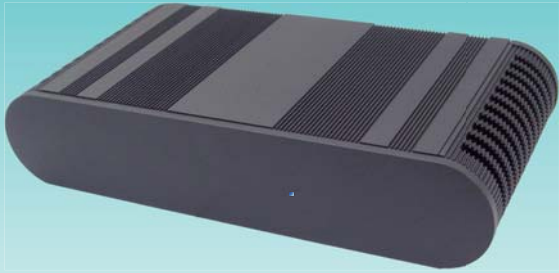


Embedded Solution

LEO Series



LEO Chassis without top-cover



**Excellent heat-dissipating feature,
Dust-proof imperforate design**

Application :
Car PC / POS / ATM / Kiosk / VPN / Server

Optional Accessory :
• Wall mount kit

Technical Data :

• Dimension	57 H x 246 W x 124 D mm
• Material	Aluminum
• Color	Black
• VESA Mounting (option)	75 x 75 mm
• Weight	1.22 Kg (Incl. M/B)
• Storage Space	2.5" HDD



31847A Back Panel

M/B information: (Please refer to M/B specification)



CPU Type	M/B Model	VGA	COM	LAN	USB	Audio	DVI / HDMI	Operation Temp.	
								CF Card / mSATA	HDD
Intel Atom D525	31525A	1	1-4	2	2	YES	-	60°C	50°C
Intel Ivy Bridge 1047UE 1~4GHz i3,i7	31847AW	Option	1-3	2	4	YES	DVI / HDMI	60°C	50°C

More Functions

DC +9V to +36V	Anti-Vibration Kit	1 ~ 4 Video-IN	4 x COM	3G	Wi-Fi	GPS
----------------	--------------------	----------------	---------	----	-------	-----

The above available functions outline the possibility with system, for more information please contact us.

Dimension

