



### Key Features

- 19" Intel Core i7/i5 Fanless Industrial Panel PC
- Intel 5th gen. Broadwell Core i3/i5/i7 CPU
- 19" LCD 4:3 1280 x 1024 350nits
- Full flat resistive/P-cap touch with front IP66 design
- Front Panel mount housing
- CE, FCC, VCCI Class B passed
- Optional Mini-PCIe WLAN with external antenna



### Main System

<b>CPU</b>	FCBGA1168 5th generation Intel® Core i7/i5/i3 processor (15W max.)
<b>Chipset</b>	SoC
<b>VGA</b>	Intel® integrated HD Graphics 5500 by CPU
<b>Memory</b>	Two 1600 MHz DDR3L SODIMM socket support dual Channel, non-ECC, up to 16GB

### LCD Panel

<b>Size</b>	19" 4:3
<b>Brightness</b>	350 nits
<b>Resolution</b>	SXGA (1280 x 1024)
<b>Color numbers</b>	16.7 M colors
<b>Viewing angle</b>	R/L 170(Typ.), U/D 160(Typ)
<b>Contrast</b>	1000:1

### Touch Panel

Technology	5-wire resistive touch (default)	Projected capacitive touch (option)
<b>Type</b>	Front full flat touch panel	Front full flat 4 point touch panel
<b>Transparency</b>	80±5%	90% ± 3%
<b>Hardness</b>	4H	7H
<b>Durability</b>	Knock 35 million times	Knock 100 million times

\* OS support (Multi point) : Win 7 pro, Win 8, Win 8.1 industrial, Win10

### Storage & Expansion

<b>HDD</b>	2.5" SATA HDD drive bay x 1 + anti-vibration kit, 500 GB
<b>Expansion slot</b>	Mini PCIe x 2 (52 pin card-edge type)

### I/O & Power & Control Keys

<b>USB</b>	USB 3.0 x 2, USB 2.0 x 2
<b>COM</b>	DB-9 x 3 {RS232 x 2, RS232/422/485 x 1 (Set by BIOS, RS485 auto flow)}
<b>LAN</b>	RJ-45 x 2, Gigabit
<b>Audio</b>	Line-out, Microphone-in (3.5 mm phone-jack)
<b>Video output</b>	DP x 2
<b>Power input</b>	DC-in x 1, 7V~32V
<b>Power adaptor</b>	External, 100 watts, universal 100 ~240V AC in, 12V DC out, 8.33A
<b>Power consumption</b>	55.2 watts (MAX. Loading without adapter )
<b>Control keys</b>	Rear bottom: Power on/off, reset

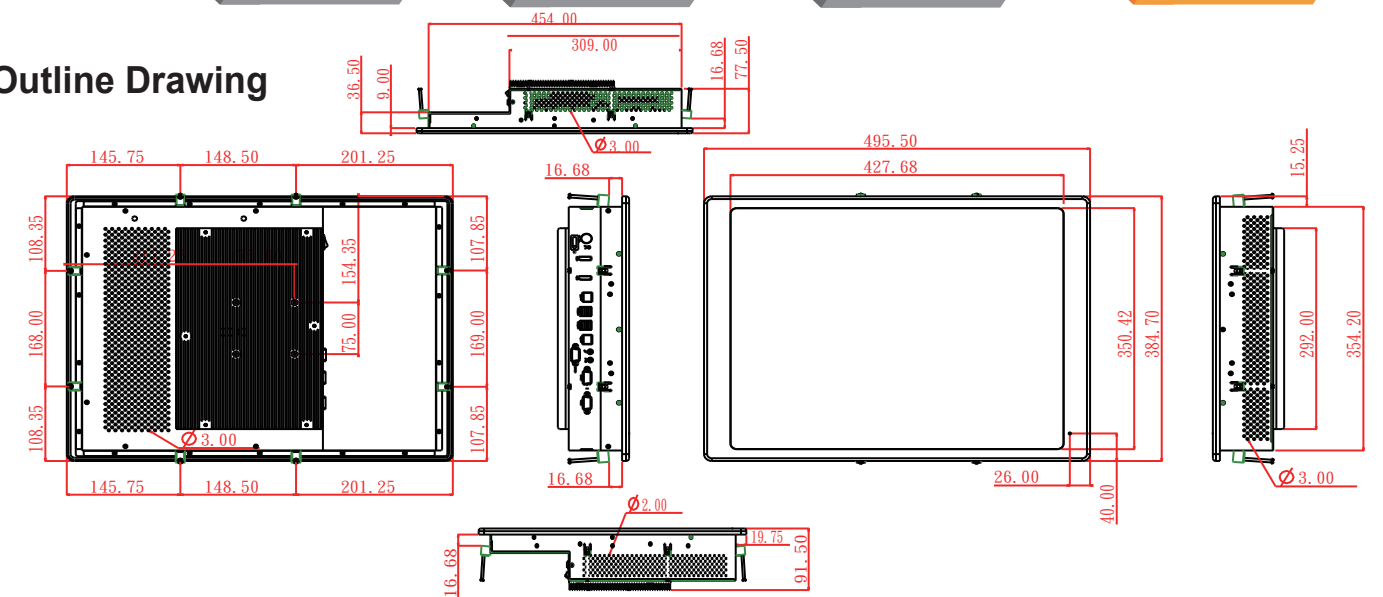
### Mechanical & Environmental

<b>Housing</b>	Front bezel is Aluminum, others are SECC
<b>IP rating</b>	Front IP66
<b>Cooling</b>	Fanless
<b>Dimension</b>	495.5 x 384.7 x 91.5 mm (W x H x D, panel mount)
<b>Weight (net)</b>	9.2 Kg (approximate, w/o power adaptor)
<b>Temperature</b>	· Operating: 0°C~50°C (w/ air flow) / 0°C~40°C (no air flow) · Storage: -20°C~60°C
<b>Humidity</b>	Operating & storage – 10%~90%, non-condensing
<b>Regulatory</b>	FCC-B, CE (EMC), VCCI

### Ordering Information

WLP-7D20-19 BKFT (i5)	R-Touch	Core i5-5200U / 4G RAM / 500G HDD
WLP-7D20-19 BKPT (i5)	P-cap Touch	Core i5-5200U / 4G RAM / 500G HDD

### Outline Drawing



### Options

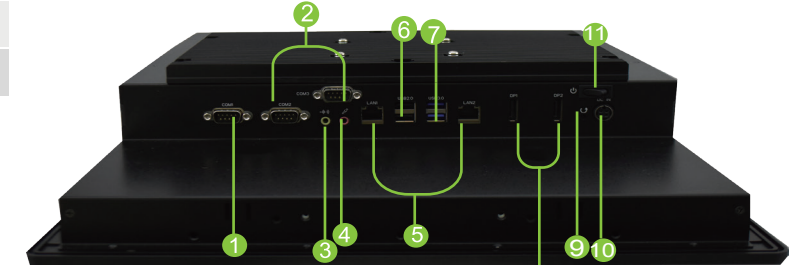
- Wireless or Wireless and BT kit (2 Dipole ant)
- 2.5" SSD
- DC input power plug (black, 1.22m length)
- Stainless front bezel
- Change full flat resistive touch to P-cap touch (BKPT)
- Sliver front bezel
- mSATA module
- Chassis type housing

### Customization

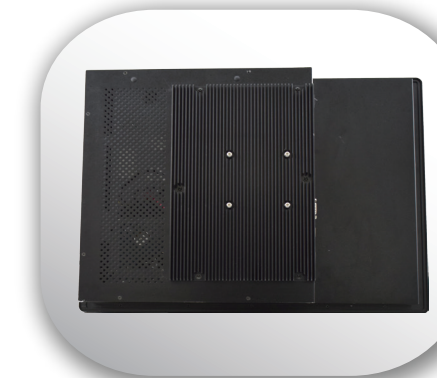
- Open frame housing
- Storage door Solution
- Sunlight readable optical bonding
- LCD Auto dimming
- LCD Super dimming ( Low brightness )
- TPM



WLP-7D20-19 CKPT  
CKFT



- |                 |                |
|-----------------|----------------|
| ① RS232/422/485 | ⑥ USB 2.0 x 2  |
| ② RS232 x 2     | ⑦ USB 3.0 x 2  |
| ③ Line out      | ⑧ DP x 2       |
| ④ Microphone-in | ⑨ Reset        |
| ⑤ LAN x 2       | ⑩ DC-in        |
|                 | ⑪ Power on/off |



Open frame housing  
(Customization)